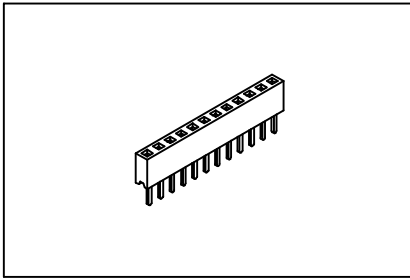


# P.C.B. Socket 2.0mm(0.079")

# GXCON



**Features:**

- \* Single row Straight type.
- \* Low profile 4.5mm(0.177").
- \* Mates with 0.50mm(0.02") square pin.

**Material:**

**Housing:** High temperature housing withstands IR and VPR soldering methods.

**Contacts:** Phosphor Bronze.

**Plating:** Gold plated over nickel.

Tin plated over nickel.

**Electrical Characteristics:**

**Current Rating:** 1 AMP.

**Insulator Resistance:** 5000MΩmin. at DC 500V.

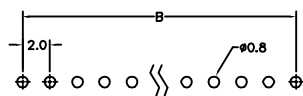
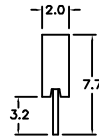
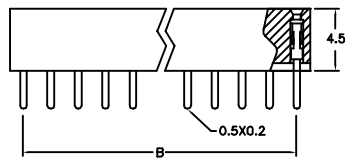
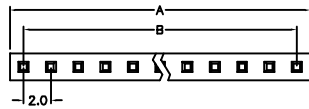
**Contact Resistance:** 20mΩmax. at DC 100mA.

**Operating Temperature:** -55°C ~ +105°C .

**Mechanical Characteristics:**

**Insertion Force:** 128g avg.(0.50mm sq. pin)

**Withdrawal Force:** 85g avg.(0.50mm sq. pin)



P.C. Board Layout

Position	2 Thru 40
Dimension	
A	2.0 X No. of Positions
B	2.0 X No. of Positions - 2.0

**Ordering information**

PS11-  $\frac{1}{40}$  Series Single Row No. of Pin Per Row       $\frac{1}{1}$ : Gold Plated       $\frac{1}{1}$ : Straight